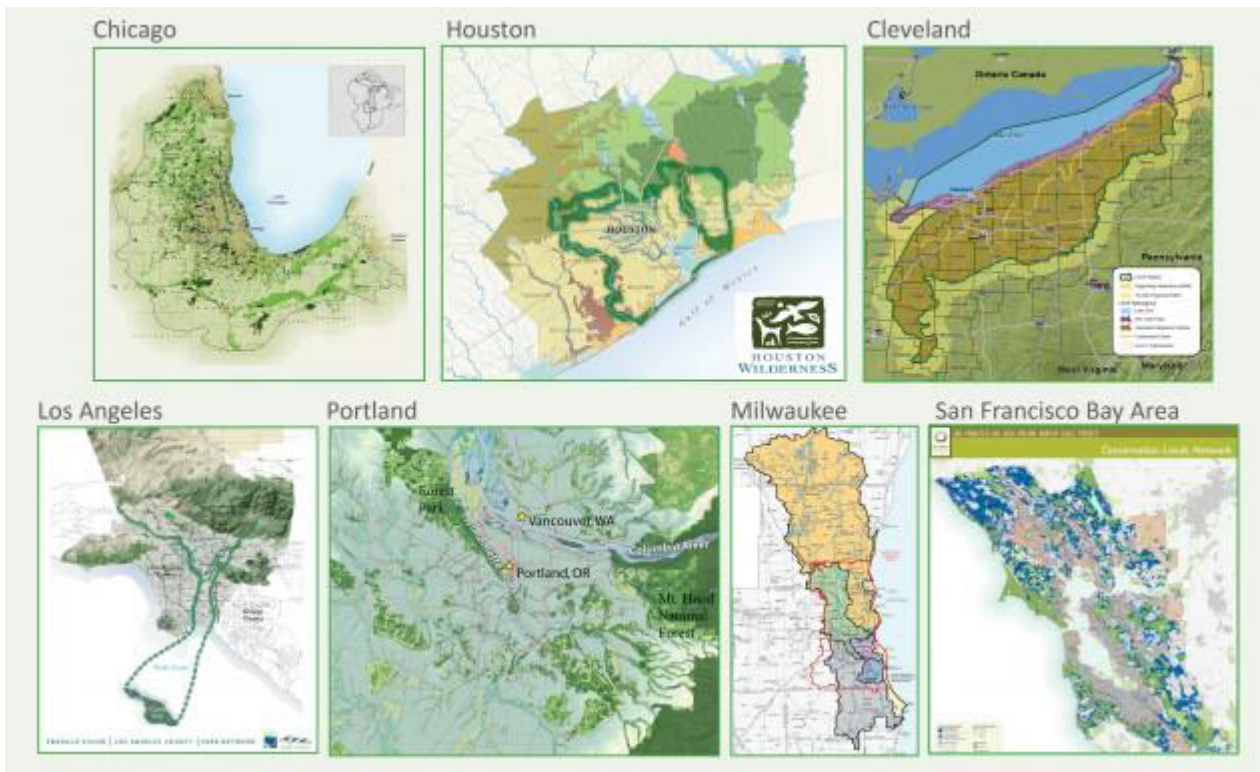


Metropolitan Greenspaces Alliance Members



Chicago Wilderness formed in the 1990's, is a regional alliance holding nearly 370,000 acres of protected lands and waters, and many that remain unprotected – connecting people and nature in southeast Wisconsin, northeast Illinois, northwest Indiana and southwest Michigan. Comprised of more than 260 local, state and federal agencies, conservation organizations, cultural and education institutions, volunteer groups, municipalities, corporations, and faith-based groups, Chicago Wilderness is working to restore local nature to health, to protect green infrastructure, to mitigate climate change, and to leave no child inside.



[Houston Wilderness](#) – formed in 2003, is a 24-county area in southeast Texas containing a wide array of ecosystems and an alliance comprised of business, tourism, governmental and environmental interests dedicated to inspiring people to preserve and explore its natural landscapes. With more than 65 partners that encourage the preservation of land, water, and wildlife, Houston Wilderness is the conservation advocate that serves to unite diverse interests to protect and improve their region’s environmental capital. Additionally, Houston Wilderness works to inspire collaborative achievements in land conservation and preservation.



[Lake Erie Allegheny Partnership for Biodiversity \(LEAP\)](#) – formed in 2004, is a consortium of organizations operating within a wide spectrum of conservation missions with regard to our natural world. LEAP’s geographic boundary encompasses the glaciated lands and waters south of Canada from Sandusky Bay to the Allegheny Mountains. Member organizations of LEAP share a common goal: to enhance the biodiversity of the region’s habitats and ecosystems. Their commitment to work collaboratively enables LEAP to leverage available resources—human, capital, and informational. LEAP initiates research and shares technical information, conducts public education and outreach efforts, and raises money to establish and support volunteer groups.



The Intertwine Alliance – formed in 2007, is a broad coalition of strong and independent organizations working to preserve land, water and habitat in the Portland/Vancouver metropolitan region and to create opportunities for residents to connect with nature. By joining forces, Alliance partners boost their effectiveness and increase investment in parks and conservation activities. The Alliance has more than 30 financial partner organizations from the public, private, and nonprofit sectors and more than 100 organizations that make in-kind contributions.



The Bay Area Open Space Council (OSC) – formed in 1990, is a collaborative of 60 organizations – community-based groups, nonprofit land trusts and public agencies – involved in conserving, stewarding, and promoting the use of parks, trails, farms, and open spaces in the San Francisco Bay Area. The OSC was created to fill the need for a coordinated approach to local land conservation and has successfully led a five-year, science-based project to identify what lands are essential to protect for preserving biodiversity with its Conservation Lands Network.





SOUTHEASTERN
WISCONSIN
WATERSHEDS
TRUST, INC.

[Sweet Water](#) – the Southeastern Wisconsin Watersheds Trust, Inc., formed in 2008, is a partnership to achieve healthy and sustainable water resources throughout the 1,100 square miles of Greater Milwaukee watersheds. Sweet Water members include independent units of government, special purpose districts, nonprofit organizations, local residents and representatives of business and academia, all sharing common goals for our shared waters. Recognizing that five rivers travel through their region irrespective of governmental boundaries, and that the health of these waters reflects shared land uses and common stressors, Sweet Water formed to address the issues facing the rivers and Lake Michigan through a unified, basin-wide approach.